

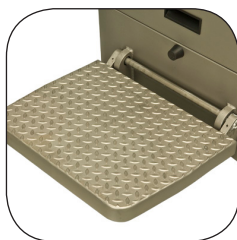


Pedestrian lowlifter truck 2.0 ton

BT levio

P-series

LPE200I



Pedestrian lowlifter

| Specification for lowlifter trucks | | | | | LPE200I |
|------------------------------------|----------------|--|-----------------------|------------------|------------------------|
| Identification | 1.1 | Manufacturer | | | BT |
| | 1.2 | Model | | | LPE200I |
| | 1.3 | Drive | | | Electric |
| | 1.4 | Operator type | | | Pedestrian |
| | 1.5 | Load capacity/rated load | Q | kg | 2000 |
| | 1.6 | Load centre | c | mm | 600 |
| | 1.8 | Load distance, centre of support arm wheel to face of forks | x | mm | 877 |
| | 1.9 | Wheelbase | y | mm | 1328 |
| Weight | 2.1 | Service weight without battery | | kg | 753 |
| | 2.2 | Axle load, with load, drive/castor/fork wheel | | kg | 554/556/1651 |
| | 2.3 | Axle load, without load, drive/castor/fork wheel | | kg | 334/269/150 |
| Wheels | 3.1 | Drive/castor/fork wheel | | | Vulkollan/PU/Vulkollan |
| | 3.2 | Wheel size, front | Ø | mm | 230x75 |
| | 3.3 | Wheel size, rear | Ø | mm | 85x95 |
| | 3.4 | Additional wheels (dimensions) | Ø | mm | 125x50 |
| | 3.5 | Wheels, number front/rear (x=driven wheels) | | | 1x+2/2 |
| | 3.6 | Track width, front | b ₁₀ | mm | 340/390/505 |
| | 3.7 | Track width, rear | b ₁₁ | mm | 580 |
| Dimensions | 4.4 | Lift | h ₃ | mm | 140 |
| | | Lift height | h ₂₃ | mm | 225 |
| | 4.8 | Stand height | h ₇ | mm | 180 |
| | 4.9 | Height of tiller in drive position, min./max. | h ₁₄ | mm | 1100/1313 |
| | 4.15 | Height, fork lowered | h ₁₃ | mm | 85 |
| | 4.19 | Overall length | l ₁ | mm | 1852 |
| | 4.20 | Length to face of forks | l ₂ | mm | 702 |
| | 4.21 | Overall width | b ₁ | mm | 790 |
| | 4.22 | Fork dimensions | s/e/l | mm | 77/150/1150 |
| | 4.25 | Width over forks | b ₅ | mm | 490/540/655 |
| | 4.32 | Ground clearance, centre of wheelbase | m ₁ | mm | 39 |
| | 4.33 | Aisle width for pallets 1000x1200 crossways | A _{st} | mm | 2493 |
| | 4.34 | Aisle width for pallets 800x1200 lengthways | A _{st} | mm | 2308 |
| 4.35 | Turning radius | W _a | mm | 1660 | |
| Performance data | 5.1 | Travel speed, with/without load | | km/h | 6,0/6,0 |
| | 5.2 | Lift speed, with/without load | | m/s | 0,05/0,07 |
| | 5.3 | Lowering speed, with/without load | | m/s | 0,08/0,07 |
| | 5.8 | Max. gradeability, with/without load | | % | 8/18 |
| | 5.10 | Service brake | | | Electric |
| Electric motor | 6.1 | Drive motor rating S2 60 min | | kW | 2,5 |
| | 6.2 | Lift motor rating at S3 10% | | kW | 2,2 |
| | 6.4 | Battery voltage/nominal capacity K ₅ | | V/Ah | 24/240 |
| | 6.5 | Battery weight | | kg | 175/275 |
| | Others | 8.1 | Type of drive control | | |
| 8.4 | | Sound level at the driver's ear acc to EN12 053 | | dB(A) | 66 |
| | | Full body vibration value according to EN 13059 and EN 12096, margin of error 30 % | | m/s ² | 0,33 |

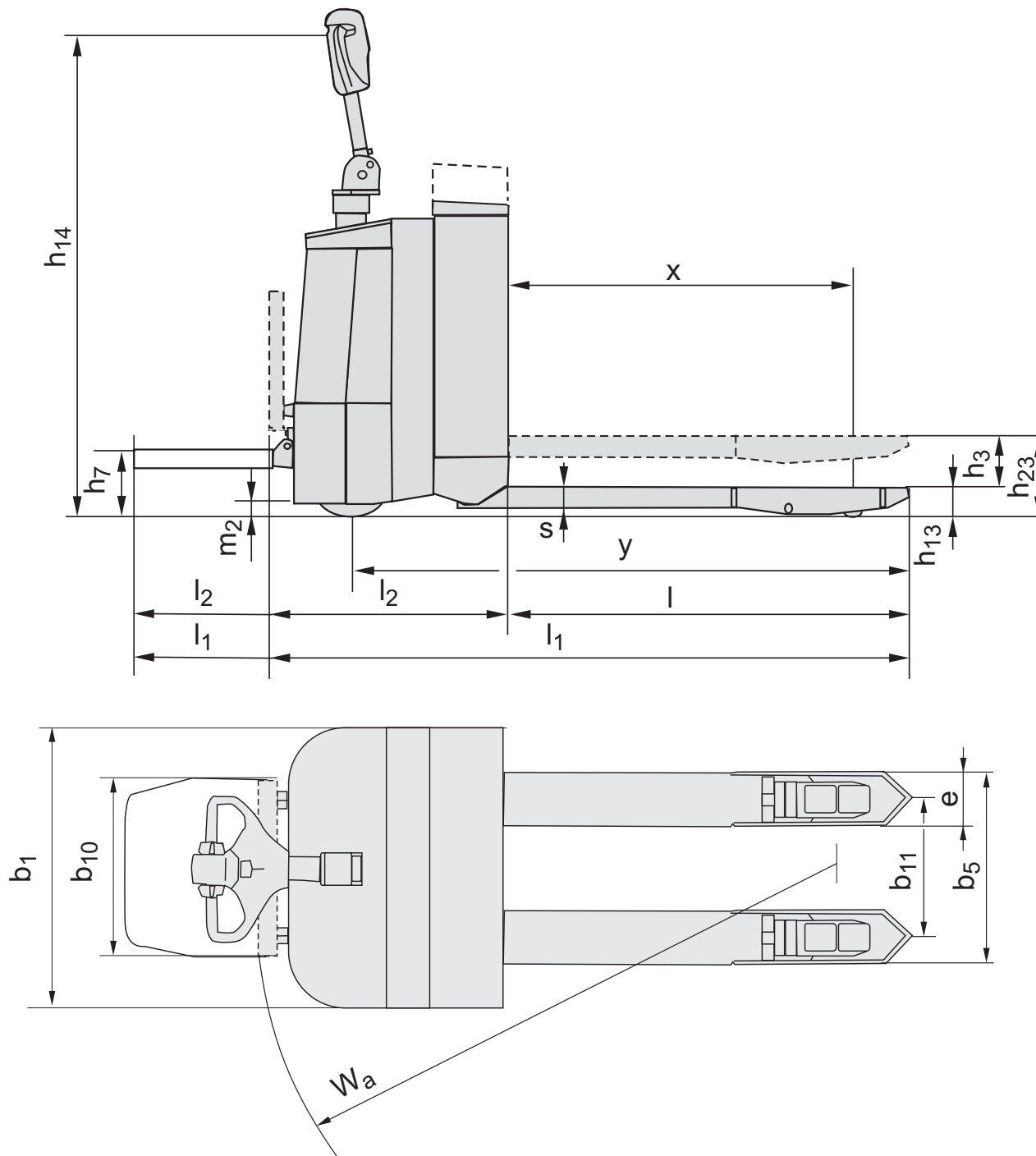
All data are based on table configuration. Other configurations may give other values.

Truck performance and dimensions are nominal and subject to tolerances.

Toyota Material Handling Manufacturing Sweden AB products and specifications are subject to change without notice.



Dimensions





Truck features:

- AC drive motor
- BT Powertrak traction system
- Readily accessible controls
- Electronic braking system
- Operator safety
- Automatic switch-off
- Programmable performance
- Easy access for maintenance
- Flip-up operator platform
- Power steering
- Click-2-creep

