

# 7500 and 7520 Deep-Reach® Truck



*7000-series*  
7500-DR32TT  
7520-DR32TT

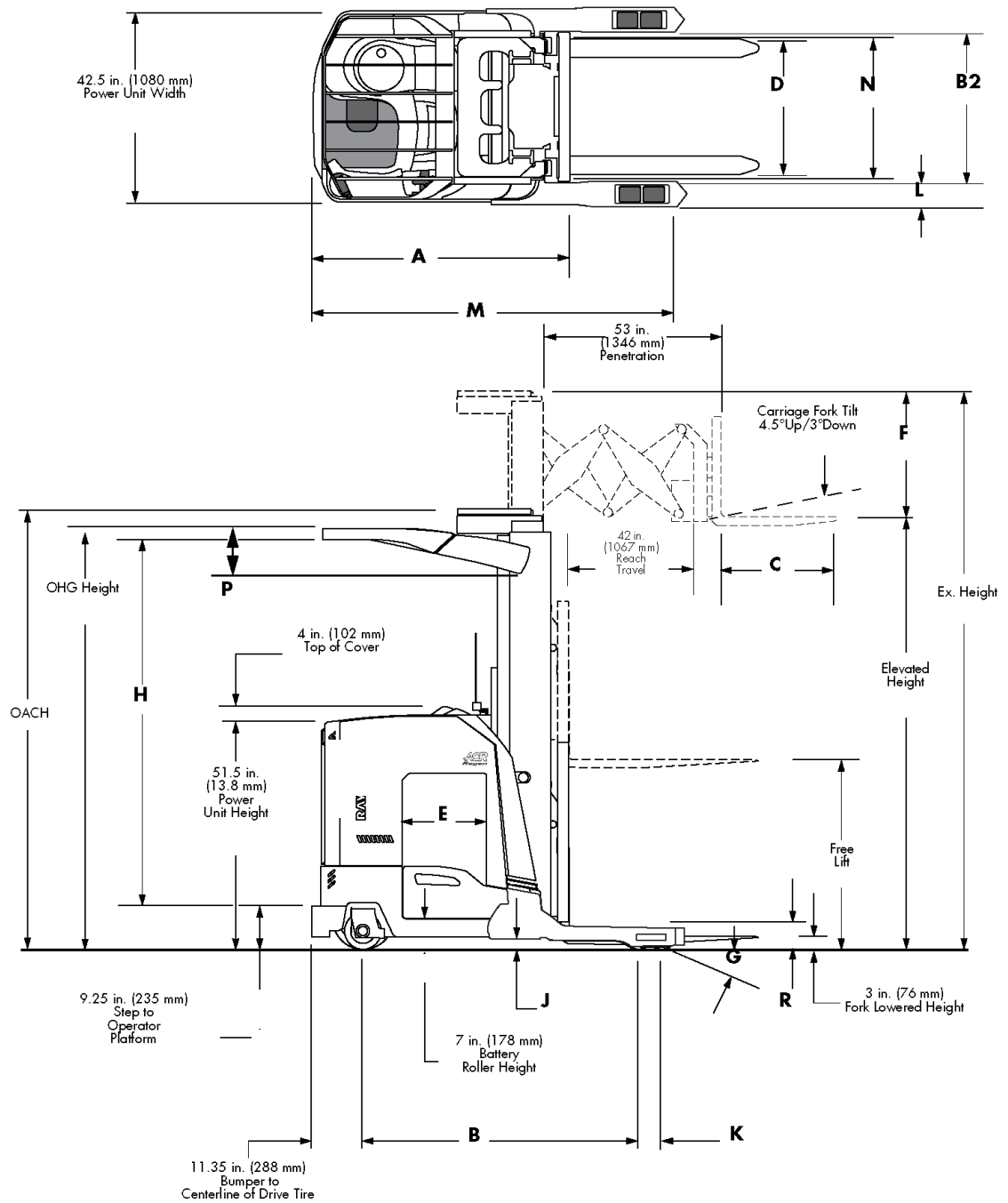
# Dimensions and General Information

| Specifications |   | In.(mm) | 7500-DR32TT w/ Sideshift<br>(El. Ht. to 372 in.) [5] | 7520-DR32TT w/ Sideshift<br>(El. Ht. to 444 in.) [4][6] |
|----------------|---|---------|--|---|
| A              | Truck Head Length w/ Sideshift                | In.(mm) | 62.0 [3] (1575)                                      | 66.8 [4] (1697)   |
| B              | Truck Wheelbase                               | In.(mm) | 61.6 [3] (1565)                                      | 65.1 [4] (1654)   |
| B2             | Baseleg Opening (BLO)                         | In.(mm) | [8]  | [8]   |
| C              | Forks, ITA Type (Std.) (L x W x T)            | In.(mm) | 42 x 4 x 1.5 (1067 x 102 x 38)                       | 42 x 4 x 1.5 (1067 x 102 x 38)                          |
| C              | Forks, Lengths (Opt.)                         | In.(mm) | 30, 36, 48 (762, 914, 1219)                          | 30, 36, 48 (762, 914, 1219)                             |
| D              | Fork Adjustment                               | In.(mm) | 15 – 30 (381 – 762)                                  | 15 – 30 (381 – 762)                                     |
| E              | Battery Compartment Max. Usable Width [2]     | In.(mm) | 16.12 [3] (409)                                      | 18.12 [4] (460)   |
| F              | Fixed Carriage Height (Without Load Backrest) | In.(mm) | 38 (965)   | 38 (965)  |
| G              | Grade Clearance                               | %       | 13   | 10  |
| H              | Operator Compartment Height                   | In.(mm) | OHG height – 11.25 (286)                             | OHG height – 11.25 (286)                                |
| J              | Truck Underclearance                          | In.(mm) | 2 (51)   | 2 (51)  |
| K              | CL to CL Load Wheel                           | In.(mm) | 5.25 (133)   | 5.25 (133)  |
| L              | Baseleg Width [7]                             | In.(mm) | 5.25 (133)   | 5.25 (133)  |
| M              | Truck Length                                  | In.(mm) | 83.3 [3] (2116)                                      | 86.8 [4] (2205)   |
| N              | Truck Mast OAW [1]                            | In.(mm) | 31 (787)   | 35.5 (902)  |
| P              | Overhead Guard Thickness                      | In.(mm) | 10.02 (254)  | 13.18 (335)   |
| Q              | Load Backrest Height                          | In.(mm) | 36 (914)   | 36 (914)  |
| R              | Baseleg Height                                | In.(mm) | 5 (127)  | 5 (127)   |

| Model   |          | 7500-DR32TT w/ Sideshift<br>(El. Ht. to 372 in.) | 7520-DR32TT w/ Sideshift<br>(El. Ht. to 444 in.) [6] |
|---|----------|--|--|
| Power Unit  |          | 36 Volt, Single Drive                            | 36 Volt, Single Drive                                |
| Max. Cap. @ 24 in.<br>(600 mm) Load Center                | lb.(kg)  | 3,200 (1451)                                     | 3,200 (1451)   |
| Operator's Compartment                                    |          | Stand-up   | Stand-up   |
| Drive Tire, Soft Poly<br>(Quantity of 1) Dia. x W         | In.(mm)  | 13.5 x 6 (343 x 152)                             | 13.5 x 6 (343 x 152)                                 |
| Steered Idler Tire, Hard Poly<br>(Quantity of 1) Dia. x W | In.(mm)  | 8 x 4 (203 x 102)                                | 8 x 4 (203 x 102)                                    |
| Load Wheels, Hard Poly<br>(Quantity of 4) Dia. x W        | In.(mm)  | 5 x 3.62 (127 x 92)                              | 5 x 3.62 (127 x 92)                                  |
| Gradability   | %        | 7  | 5  |
| Turning Radius  | In. (mm) | 75.6 [3][9] (1920)                               | 79.6 [3][9] (2022)                                   |
| Mast Type   |          | 3-Stage  | 3-Stage  |
| Maximum Elevated Mast Height                              | in. (mm) | 372 (9449)                                       | 444 (11278)  |

## NOTES:

- [1] Add 3.0 in. (76 mm) at OHG side plates.  
 [2] Additional clearance available, 0.25 in. (6.4 mm) with minor alteration.  
 [3] Add 2 in. (51 mm) for 18.12 in. (460 mm) B.C. and 5 in. (127 mm) for 21.12 in. (536 mm) B.C.  
 [4] Add 3 in. (76 mm) for 21.12 in. (536 mm) B.C.  
 [5] [5] For lift heights from 331 in. (8407 mm) to 372 in. (9449 mm): Requires 18.12 in. (460 mm) B.C. or 21.12 in. (536 mm) B.C. AC/AC configuration.  
 [6] For lift heights greater than 400 in. (10160 mm): Requires 21.12 in. (536 mm) B.C.  
 [7] The baseleg overall width is the inside dimension (BLO) plus 10.5 in. (266.7 mm). You may need to reduce the inside dimension 1 in. (25.4 mm) to accommodate existing applications.  
 [8] Available baseleg openings (BLO) are 33, 34, 35, 36, 37, 38, 39, 40, 41, 42, 43, 44, 49, 50, 51, and 52 inches. For Elevated Heights at 331 in. (8407 mm) or greater, 37 in (940 mm) is minimum BLO.  
 [9] Sideshift is included in dimensions.



| <b>Mast Specifications</b>  | <b>OACH [1]</b> | <b>Elevated Height [2][7]</b> | <b>Extended Height [2]</b> | <b>Full Free Lift</b> | <b>OHG Height [3]</b> | <b>Truck Weight without Battery [8]</b> |
|---|-----------------|-------------------------------|----------------------------|-----------------------|-----------------------|---|
| <b>Model</b>  | in. (mm)        | in. (mm)                      | in. (mm)                   | in. (mm)              | in. (mm)              | lb.(kg)                                 |
| <b>7500-DR32TT</b><br><b>(AC Lift, Electronic Power Steering)</b><br><b>(16.12 in. B.C.) [4]</b><br><b>(El. Ht. to 330 in.)</b> | 89 (2260)       | 189 (4800)                    | 227 (5766)                 | 38 (965)              | 87.4 (2220)           | 5,949 (2698)                            |
|   | 95 (2413)       | 207 (5258)                    | 245 (6223)                 | 50 (1270)             | 93.4 (2372)           | 6,079 (2757)                            |
|   | 100 (2540)      | 216 (5486)                    | 254 (6452)                 | 55 (1397)             | 93.4 (2372)           | 6,161 (2795)                            |
|   | 107 (2718)      | 237 (6020)                    | 275 (6985)                 | 62 (1579)             | 93.4 (2372)           | 6,420 (2912)                            |
|   | 114 (2896)      | 252 (6401)                    | 290 (7366)                 | 69 (1753)             | 93.4 (2372)           | 6,534 (2964)                            |
|   | 118 (2997)      | 264 (6706)                    | 302 (7671)                 | 73 (1854)             | 93.4 (2372)           | 6,599 (2993)                            |
|   | 122 (3099)      | 276 (7010)                    | 314 (7976)                 | 77 (1956)             | 93.4 (2372)           | 6,664 (3023)                            |
|   | 128 (3251)      | 288 (7315)                    | 326 (8280)                 | 83 (2108)             | 93.4 (2372)           | 6,762 (3067)                            |
|   | 135 (3429)      | 302 (7671)                    | 340 (8636)                 | 90 (2286)             | 93.4 (2372)           | 6,876 (3119)                            |
|   | 141 (3581)      | 315 (8001)                    | 353 (8966)                 | 96 (2438)             | 93.4 (2372)           | 6,974 (3163)                            |
|   | 142 (3607)      | 321 (8153)                    | 359 (9119)                 | 97 (2464)             | 93.4 (2372)           | 7,007 (3178)                            |
|   | 146 (3708)      | 330 (8382)                    | 368 (9347)                 | 101 (2565)            | 93.4 (2372)           | 7,093 (3217)                            |
| <b>7500-DR32TT</b><br><b>(AC Lift, Electronic Power Steering)</b><br><b>(18.12 in. B.C.) [5]</b><br><b>(El. Ht. to 330 in.)</b> | 89 (2260)       | 189 (4800)                    | 227 (5766)                 | 38 (965)              | 87.4 (2220)           | 5,949 (2698)                            |
|   | 95 (2413)       | 207 (5258)                    | 245 (6223)                 | 50 (1270)             | 93.4 (2372)           | 6,079 (2757)                            |
|   | 100 (2540)      | 216 (5486)                    | 254 (6452)                 | 55 (1397)             | 93.4 (2372)           | 6,161 (2795)                            |
|   | 107 (2718)      | 237 (6020)                    | 275 (6985)                 | 62 (1579)             | 93.4 (2372)           | 6,420 (2912)                            |
|   | 114 (2896)      | 252 (6401)                    | 290 (7366)                 | 69 (1753)             | 93.4 (2372)           | 6,534 (2964)                            |
|   | 118 (2997)      | 264 (6706)                    | 302 (7671)                 | 73 (1854)             | 93.4 (2372)           | 6,599 (2993)                            |
|   | 122 (3099)      | 276 (7010)                    | 314 (7976)                 | 77 (1956)             | 93.4 (2372)           | 6,664 (3023)                            |
|   | 128 (3251)      | 288 (7315)                    | 326 (8280)                 | 83 (2108)             | 93.4 (2372)           | 6,762 (3067)                            |
|   | 135 (3429)      | 302 (7671)                    | 340 (8636)                 | 90 (2286)             | 93.4 (2372)           | 6,876 (3119)                            |
|   | 141 (3581)      | 315 (8001)                    | 353 (8966)                 | 96 (2438)             | 93.4 (2372)           | 6,974 (3163)                            |
|   | 142 (3607)      | 321 (8153)                    | 359 (9119)                 | 97 (2464)             | 93.4 (2372)           | 7,007 (3178)                            |
|   | 146 (3708)      | 330 (8382)                    | 368 (9347)                 | 101 (2565)            | 93.4 (2372)           | 7,093 (3217)                            |

| <b>Mast Specifications</b>  | <b>OACH [1]</b> | <b>Elevated Height [2][4]</b> | <b>Extended Height [2]</b> | <b>Full Free Lift [3]</b> | <b>OHG Height [3]</b> | <b>Truck Weight without Battery [9]</b> |
|---|-----------------|-------------------------------|----------------------------|---------------------------|-----------------------|---|
| <b>Model</b>  | in. (mm)        | in. (mm)                      | in. (mm)                   | in. (mm)                  | in. (mm)              | lb.(kg)                                 |
| <b>7500-DR32TT</b><br><b>(AC Lift, Electronic Power Steering)</b><br><b>(21.12 in. B.C.) [6]</b><br><b>(El. Ht. to 330 in.)</b> | 89 (2260)       | 189 (4800)                    | 227 (5766)                 | 38 (965)                  | 87.4 (2220)           | 5,949 (2698)                            |
|   | 95 (2413)       | 207 (5258)                    | 245 (6223)                 | 50 (1270)                 | 93.4 (2372)           | 6,079 (2757)                            |
|   | 100 (2540)      | 216 (5486)                    | 254 (6452)                 | 55 (1397)                 | 93.4 (2372)           | 6,161 (2795)                            |
|   | 107 (2718)      | 237 (6020)                    | 275 (6985)                 | 62 (1579)                 | 93.4 (2372)           | 6,420 (2912)                            |
|   | 114 (2896)      | 252 (6401)                    | 290 (7366)                 | 69 (1753)                 | 93.4 (2372)           | 6,534 (2964)                            |
|   | 118 (2997)      | 264 (6706)                    | 302 (7671)                 | 73 (1854)                 | 93.4 (2372)           | 6,599 (2993)                            |
|   | 122 (3099)      | 276 (7010)                    | 314 (7976)                 | 77 (1956)                 | 93.4 (2372)           | 6,664 (3023)                            |
|   | 128 (3251)      | 288 (7315)                    | 326 (8280)                 | 83 (2108)                 | 93.4 (2372)           | 6,762 (3067)                            |
|   | 135 (3429)      | 302 (7671)                    | 340 (8636)                 | 90 (2286)                 | 93.4 (2372)           | 6,876 (3119)                            |
|   | 141 (3581)      | 315 (8001)                    | 353 (8966)                 | 96 (2438)                 | 93.4 (2372)           | 6,974 (3163)                            |
|   | 142 (3607)      | 321 (8153)                    | 359 (9119)                 | 97 (2464)                 | 93.4 (2372)           | 7,007 (3178)                            |
|   | 146 (3708)      | 330 (8382)                    | 368 (9347)                 | 101 (2565)                | 93.4 (2372)           | 7,093 (3217)                            |

- NOTES:**
- [1] Tolerance = +/- 0.75 in. (+/- 19 mm).
  - [2] Tolerance = +2.5/-0.5 in. (+64/-13 mm).
  - [3] Tolerance = +/- 1 in. (+/- 25.4 mm).
  - [4] Usable size is 16.12 in. (409 mm); outside dimension is 16.5 in. (419 mm).
  - [5] Usable size is 18.12 in. (460 mm), outside dimension is 18.5 in. (470 mm).
  - [6] Usable size is 21.12 in. (536 mm), outside dimension is 21.5 in. (546 mm).
  - [7] Recommended lift-off height is 10 in. (254 mm) higher than top beam height.
  - [8] Shipping weight is 10% greater for crated trucks.

**Important Information:**

Full free lifts shown are for basic reach carriage with power tilt. Decrease values when non-standard load backrest or remote station are used.

| <b>Mast Specifications</b>   | <b>OACH [1]</b> | <b>Elevated Height [2][7]</b> | <b>Extended Height [2]</b> | <b>Full Free Lift</b> | <b>OHG Height [3]</b> | <b>Truck Weight without Battery [8]</b> |
|--|-----------------|-------------------------------|----------------------------|-----------------------|-----------------------|---|
| <b>Model</b>   | in. (mm)        | in. (mm)                      | in. (mm)                   | in. (mm)              | in. (mm)              | lb.(kg)                                 |
| <b>7500-DR32TT<br/>(AC Lift, Electronic Power Steering)<br/>(18.12 in. B.C.) [5]<br/>(El. Ht. 331 in. – 372 in.)</b> | 148 (3759)      | 336 (8534)                    | 374 (9500)                 | 103 (2616)            | 93.4 (2372)           | 7,170 (3252)                            |
|  | 152 (3861)      | 348 (8839)                    | 386 (9804)                 | 107 (2718)            | 93.4 (2372)           | 7,286 (3305)                            |
|  | 156 (3962)      | 360 (9144)                    | 398 (10109)                | 111 (2819)            | 93.4 (2372)           | 7,402 (3357)                            |
|  | 160 (4064)      | 372 (9449)                    | 410 (10414)                | 115 (2921)            | 93.4 (2372)           | 7,518 (3410)                            |
| <b>7500-DR32TT<br/>(AC Lift, Electronic Power Steering)<br/>(21.12 in. B.C.) [6]<br/>(El. Ht. 331 in. – 372 in.)</b> | 148 (3759)      | 336 (8534)                    | 374 (9500)                 | 103 (2616)            | 93.4 (2372)           | 7,203 (3267)                            |
|  | 152 (3861)      | 348 (8839)                    | 386 (9804)                 | 107 (2718)            | 93.4 (2372)           | 7,318 (3319)                            |
|  | 156 (3962)      | 360 (9144)                    | 398 (10109)                | 111 (2819)            | 93.4 (2372)           | 7,434 (3372)                            |
|  | 160 (4064)      | 372 (9449)                    | 410 (10414)                | 115 (2921)            | 93.4 (2372)           | 7,550 (3425)                            |
| <b>7520-DR32TT<br/>(AC Lift, Electronic Power Steering)<br/>(18.12 in. B.C.) [5]<br/>(El. Ht. 346 in. – 400 in.)</b> | 149 (3785)      | 346 (8788)                    | 384 (9754)                 | 104 (2642)            | 93.4 (2372)           | 8520 (3865)                             |
|  | 157 (3988)      | 370 (9398)                    | 408 (10363)                | 112 (2845)            | 93.4 (2372)           | 8550 (3878)                             |
|  | 159 (4039)      | 376 (9550)                    | 414 (10516)                | 114 (2896)            | 93.4 (2372)           | 8570 (3887)                             |
|  | 167 (4242)      | 400 (10160)                   | 438 (11125)                | 122 (3099)            | 93.4 (2372)           | 8620 (3910)                             |
| <b>7520-DR32TT<br/>(AC Lift, Electronic Power Steering)<br/>(21.12 in. B.C.) [6]<br/>(El. Ht. 346 in. – 444 in.)</b> | 149 (3785)      | 346 (8788)                    | 384 (9754)                 | 104 (2642)            | 93.4 (2372)           | 8520 (3865)                             |
|  | 157 (3988)      | 370 (9398)                    | 408 (10363)                | 112 (2845)            | 93.4 (2372)           | 8550 (3878)                             |
|  | 159 (4039)      | 376 (9550)                    | 414 (10516)                | 114 (2896)            | 93.4 (2372)           | 8570 (3887)                             |
|  | 167 (4242)      | 400 (10160)                   | 438 (11125)                | 122 (3099)            | 93.4 (2372)           | 8620 (3910)                             |
|  | 174 (4420)      | 421 (10693)                   | 459 (11659)                | 129 (3277)            | 93.4 (2372)           | 8670 (3933)                             |
|  | 184 (4674)      | 444 (11278)                   | 482 (12243)                | 139 (3531)            | 93.4 (2372)           | 8740 (3964)                             |

- NOTES:**
- [1] Tolerance = +/- 0.75 in. (+/- 19 mm).
  - [2] Tolerance = +2.5/-0.5 in. (+64/-13 mm).
  - [3] Tolerance = +/- 1 in. (+/- 25.4 mm).
  - [4] Usable size is 16.12 in. (409 mm); outside dimension is 16.5 in. (419 mm).
  - [5] Usable size is 18.12 in. (460 mm), outside dimension is 18.5 in. (470 mm).
  - [6] Usable size is 21.12 in. (536 mm), outside dimension is 21.5 in. (546 mm).
  - [7] Recommended lift-off height is 10 in. (254 mm) higher than top beam height.
  - [8] Shipping weight is 10% greater for crated trucks.

**Important Information:**

Full free lifts shown are for basic reach carriage with power tilt. Decrease values when non-standard load backrest or remote station are used.

| Performance Specifications   |            | 7500-DR32TT (AC/AC)<br>(El. Ht. to 330 in.) |            | 7500-DR32TT (AC/AC)<br>(El. Ht. to 372 in.) |            | 7520-DR32TT (AC/AC) [4]<br>(El. Ht. to 444 in.) |                    |
|--|------------|---|------------|---|------------|---|--------------------|
| Battery Compartment  | in.(mm)    | 16.12 (409)                                 |            | 18.12 or 21.12 (460 or 536)                 |            | 18.12 or 21.12 (460 or 536)                     |                    |
| <b>Main Controls</b>   |            |   |            | Standard                                    | With Regen | With Regen                                      |                    |
| Lift Speed Unloaded [1]  | fpm (m/s)  | 150 (0.76)                                  |            | 150 (0.76)                                  | 160 (0.81) | 160 (0.81)                                      |                    |
| Lift Speed w/Full Load [1]   | fpm (m/s)  | 110 (0.56)                                  |            | 90 (0.46)                                   | 90 (0.46)  | 110 (0.56)                                      |                    |
| Lift Speed w/3,000 lb. Load [1]  | fpm (m/s)  | 95 (0.48)                                   |            | 95 (0.48)                                   | 95 (0.48)  | 115 (0.58)                                      |                    |
| Lift Speed w/2,500 lb. Load [1]  | fpm (m/s)  | 105 (0.53)                                  |            | 105 (0.53)                                  | 105 (0.53) | 120 (0.61)                                      |                    |
| Lift Speed w/2,000 lb. Load [1]  | fpm (m/s)  | 115 (0.58)                                  |            | 115 (0.58)                                  | 115 (0.58) | 130 (0.66)                                      |                    |
| Lift Speed w/1,000 lb. Load [1]  | fpm (m/s)  | 135 (0.68)                                  |            | 135 (0.68)                                  | 135 (0.68) | 145 (0.74)                                      |                    |
|  |            | Unloaded                                    | Loaded     | Unloaded                                    | Loaded     | Unloaded  | Loaded             |
| Lower Speed [1]  | fpm (m/s)  | 110 (0.56)                                  | 110 (0.56) | 110 (0.56)                                  | 110 (0.56) | 110 (0.56)                                      | 110 (0.56)         |
| Travel Speed [1]   | mph (km/h) | 8.0 (12.9)                                  | 7.5 (12.1) | 8.0 (12.9)                                  | 7.5 (12.1) | 8.0 (12.9)                                      | 7.0 [2] [3] (11.2) |
| Travel Current   | amp        | 140   | 190        | 140   | 190        | TBA   | TBA                |
| <b>Auxiliary Controls</b>  |            |   |            |   |            |   |                    |
| Reach Time   | sec        | 3.5   | 3.6        | 3.5   | 3.6        | 3.6   | 3.6                |
| Tilt Time  | sec        | 1.9   | 2.2        | 1.9   | 2.2        | 2.0   | 2.7                |
| <b>NOTES:</b> [1] Maximum speed attainable, after break-in period, varies with truck weight, rolling resistance, mast height, options and battery condition.<br>[2] 7.5 mph (12.1 km/h) with up to 1500 lb. (680 kg) load.<br>[3] With load greater than 1500 lb. (680 kg) in either direction. Model 7520 maximum shown; may be lower based on vehicle weight.<br>[4] For lift heights greater than 400 in. (10160 mm): Requires 21.12 in. (536) B.C. |            |   |            |   |            |   |                    |

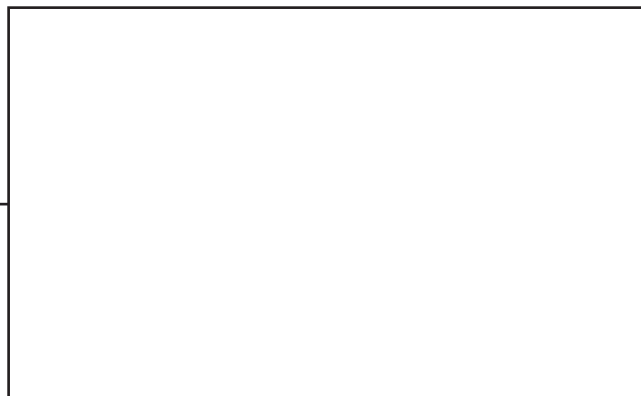
| Battery Specifications  |          | 7500-DR32TT<br>(El. Ht. to 330 in.)               | 7500-DR32TT<br>(El. Ht. to 372 in.)            | 7520-DR32TT<br>(El. Ht. to 400 in.)            | 7520-DR32TT<br>(El. Ht. to 444 in.)         |
|---|----------|---|--|--|---|
| Ampere-hours, Max.  |          | 1240  | 1240   | 1240   | 1240  |
| Battery Connector Type  |          | SB-350  | SB-350   | SB-350   | SB-350                                      |
| Battery Connector Color   |          | Gray  | Gray   | Gray   | Gray  |
| Lead Location   |          | B   | B  | B  | B   |
| Lead Length   | in. (mm) | 15 (381)  | 15 (381)                                       | 15 (381)                                       | 15 (381)                                    |
| Max. Usable Comp Size<br>(L x W x H) [1][2]   | in.(mm)  | 38.62 x 16.12 x 31<br>(981 x 409 x 787) [3][4][5] | 38.62 x 18.12 x 31<br>(981 x 460 x 787) [3][5] | 38.62 x 18.12 x 31<br>(981 x 460 x 787) [5]    | 38.62 x 21.12 x 31<br>(981 x 536 x 787) [5] |
| Optional Battery Comp. Max. Usable Comp Size<br>(L x W x H) [1][2]  | in.(mm)  | 38.62 x 18.12 x 31<br>(981 x 460 x 787) [3][4][5] | 38.62 x 21.12 x 31<br>(981 x 536 x 787) [4][5] | 38.62 x 21.12 x 31<br>(981 x 536 x 787) [4][5] | -   |
| Optional Battery Comp. Max. Usable Comp Size<br>(L x W x H) [1][2]  | in.(mm)  | 38.62 x 21.12 x 31<br>(981 x 536 x 787) [3][4][5] | -  | -  | -   |
| Battery Weight, Max. (16.12 in. Battery Comp.)  | lb.(kg)  | 2,300 (1043)                                      | 2,300 (1043)                                   | -  | -   |
| Battery Weight, Max. (18.12 in. Battery Comp.)  | lb.(kg)  | 2,600 (1179)                                      | 2,600 (1179)                                   | 2,600 (1179)                                   | -   |
| Battery Weight, Max. (21.12 in. Battery Comp.)  | lb.(kg)  | 2,900 (1315)                                      | 2,900 (1315)                                   | 2,900 (1315)                                   | 2,900 (1315)                                |
| Battery Weight, Min. (16.12 in. Battery Comp.)  | lb.(kg)  | 2,000 (907)                                       | 2,000 (907)                                    | -  | -   |
| Battery Weight, Min. (18.12 in. Battery Comp.)  | lb.(kg)  | 2,300 (1043)                                      | 2,300 (1043)                                   | 2,300 (1043)                                   | 2,300 (1043)                                |
| Battery Weight, Min. (21.12 in. Battery Comp.)  | lb.(kg)  | 2,600 (1179)                                      | 2,600 (1179)                                   | 2,600 (1179)                                   | 2,600 (1179)                                |
| <b>NOTES:</b> [1] Use battery spacers as required to maintain maximum of 0.5 in. gap between battery and wall.<br>[2] Additional clearance available, 0.25 in. (6 mm) with minor adjustment.<br>[3] 18.12 in. (460 mm) battery compartment size is optional.<br>[4] 21.12 in. (536 mm) battery compartment size is optional.<br>[5] Height at center to accommodate lifting eye is 31 in. (787 mm), height at corner is 29 in. (737 mm).<br>Battery with cover recommended maximum height is 29 in. (737 mm). |          |   |  |  |   |

## Standard Equipment

- 36 volt Power Unit
- 42 in. Reach Mechanism
- A-Frame Suspension (patented)
- AC-Traction System
- AC Lift System
- Advanced Ergonomic Design
- Auto Position Hold
- Auto Power Off™ Device
- Battery Compartment (16.12, 18.12, or 21.12 in. Usable)
- Bi-Directional
- Bolt-on, Ductile Iron Baselegs
- Brake, Electric
- Console Work Surface & Storage Compartment
- Controls Active Maintenance Diagnostics
- Emergency Power Disconnect
- Energy Efficient Operation
- Floor Pad, Soft Cushioned
- Gauge, Battery State-of-Charge w/Lift Interrupt
- High Speed Lift with Regenerative Lowering (Model 7520 only)
- Horn
- Hour Meters: Key Hours, Deadman Activated, Time Spent Lifting, Distance Traveled
- Hydraulic Mast Staging
- Inertial Dampener (above 270 in. EH)
- Lift System Relief Valve
- Load Wheels, Floating Articulation, Bolt-on
- Low Step Height
- Maintenance Minder™ Tool
- Mast, Cushioned Stops
- Mast, High Efficiency
- Mast, Large Main Frame Channel
- Mast Lowering Deceleration
- Mast Lowering Flow Control
- Mast, Open View
- Mast Speed Variable Lift/Lower
- Mast Staging
- OSHA and ANSI/ITSDF Compliance
- Overhead Guard
- Owner and Operator Manuals
- Parking Brake, Automatic Engaging
- Programmability Performance
- Pivot Bearing, 12.5 in. Diameter/Low Profile
- Polyurethane Drive Tire and Idler
- Power-up and Run Time Diagnostics Real Time with Status/Fault Codes
- Proportional Plugging
- Reach/Retract Cushions
- Regenerative Braking
- Scissor Mechanism with Torsion Tube, Thrust, and Anti-Friction Rollers/Ball Bearings
- Sideshift, Integral type 2 in., and Power Tilt
- Simultaneous Function Control Handle/Single - Axis/Relaxed Grip
- Spacious Compartment with Multiple Lean Points & Universal Stack Stance and Dockstance
- Steering, Electronic
- Steered Idler
- Straddle Baselegs
- The ACR System™
- UID (User Interface) with Selectable Display
- UL Type “E” Construction
- Warranties, Asset Protection Standard Warranty Coverage Structural Extended Warranty
- Weight Sensing

## Available Options

- Audible Alarms
- Battery Gate Interlock
- Cold Storage Conditioning
- Height Indicators
- Keyless On/Off
- Lights
- Load Backrest 38” (965 mm), 42” (1067 mm), 48”(1219 mm), (36” [914 mm] Std)
- Secondary Control Handle
- ThermaKit™ Cold Storage Comfort Package
- Vantage Point™ Camera System
- iWAREHOUSE Fleet Optimization System



TMH1240468A75007520 - version 1, 1220